

**6890 Shepard Mesa Road**  
**Carpinteria, California**  
**Offered at \$1,825,000**



Indulge your senses with tranquil ocean views flanked by majestic mountains in this one-of-a kind property of just under an acre, with the utmost in privacy. Both the main house and the guest house have large decks off the dining room for the indoor outdoor living that defines the Santa Barbara lifestyle. Numerous trails, vegetable gardens, an outdoor barbeque pit, and a plethora of fruit trees contribute to the peacefulness and serenity of this unique property which is truly unmatched, and provides a welcoming respite from today's hectic pace of life.

*For more information, please call*

**Karen Musser**

**Office:** 805.565.8115

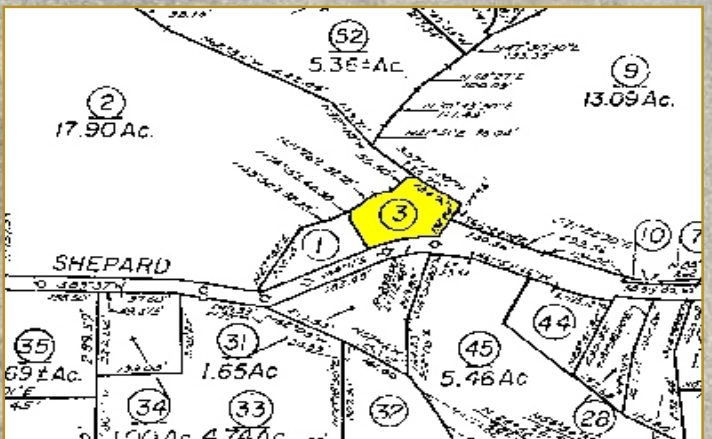
**Cellular:** 805.895.3958

karen@karenmusser.com

www.KarenMusser.com



**COLDWELL BANKER**  
**PREVIEWS**  
*International.*



*Information furnished here deemed reliable, but is not guaranteed.*